



## 4G and 5G mobile hotspots with the speed and security students need

**U.S.-based Inseego is the only original equipment manufacturer (OEM) with MiFi® mobile hotspots that:**

- Use the latest, fastest wireless technologies to meet the FCC “broadband” benchmark of at least 25 Mbps<sup>1</sup>
- Enable compliance with the **Children’s Internet Protection Act (CIPA)**, including content filtering
- Provide **advanced security** with multiple layers of anti-hacking, anti-spoofing and admin features to prevent students from changing settings
- Are fully designed and developed in the U.S.A.

## Today’s education crisis requires today’s technology



### Speed

**The FCC definition of “broadband internet” is at least 25 Mbps download speed — the bare minimum required to support today’s digital learning tools. Obsolete hotspots fail to meet this standard. Bridging the digital divide in education requires faster, more reliable internet connections.**

- Low-tier, Cat 4 LTE hotspots currently being sold to the U.S. Government and offered to students are based on outdated technology from 2008 with typical speeds of 15 Mbps
- Inseego MiFi 8000 mobile hotspots support dual-band Wi-Fi and Cat 18 LTE, with typical speeds of 120 Mbps



### Security

**The FCC mandates CIPA compliance to protect children from harmful internet content<sup>2</sup>**

- Low-tier, Cat 4 LTE hotspots currently being sold to the U.S. Government and offered to students do not have additional security layers that enable CIPA compliance
- Government-issued devices from Chinese manufacturers TCL/Coolpad Surf are reported to have “extensive built-in backdoors.”<sup>3</sup>
- Inseego devices are secure by design and enable CIPA compliance along with additional security layers:
  - CIPA: Anti-spoofing, anti-hacking, content filtering with domain blacklist/whitelist
  - Network intrusion protection
  - Wi-Fi privacy separation and security
  - Turn off Wi-Fi broadcasting and enable single-use USB tethering
  - MAC Address filtering to whitelist/blacklist connected devices
  - Unique/random web interface password
  - Security-hardened admin portal to secure settings
  - 3rd party penetration testing

## About Inseego

- U.S.-based company, incorporated 1996 (Nasdaq: INSG)
- 25 years of mobile technology experience and industry firsts
- 4G/5G leadership with gigabit 4G LTE and the industry’s first commercial 5G mobile hotspot
- Broad portfolio of fixed, mobile, IoT and cloud solutions: All major U.S. carriers are currently customers
- Solutions trusted by U.S. Government and enterprises
- Large install base of customers: U.S. Government state, local, federal, military and education customers, U.S. financial institutions and other Fortune 500 enterprises
- Portfolio of mobile edge devices support 4G LTE Advanced Pro, 5G, CBRS, LAA, and advanced security features

1. FCC. Broadband Progress Reports. <https://www.fcc.gov/reports-research/reports/broadband-progress-reports/2015-broadband-progress-report>

2. FCC. CIPA Compliance. [https://www.fcc.gov/sites/default/files/childrens\\_internet\\_protection\\_act\\_cipa.pdf](https://www.fcc.gov/sites/default/files/childrens_internet_protection_act_cipa.pdf)

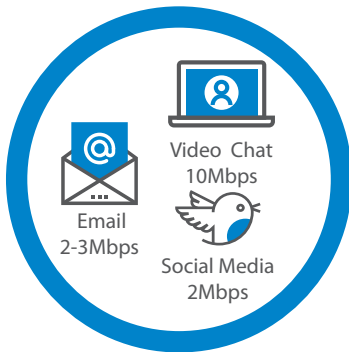
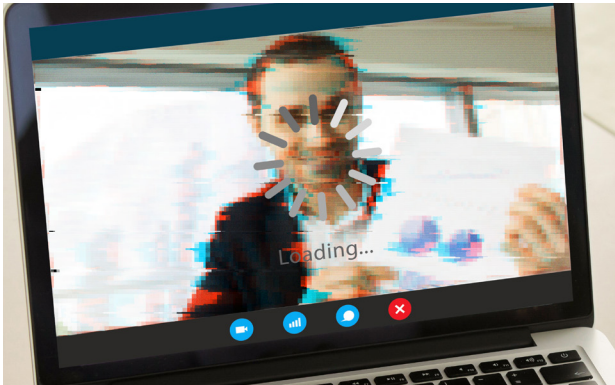
3. Computer World. Chinese Android phone maker hides secret backdoor on its devices. <https://www.computerworld.com/article/2860742/chinese-android-phone-maker-hides-secret-backdoor-on-its-devices.html>

# Dispelling the Myths of Connection Speed

## Speed Matters

### Low Speed / Low Capacity

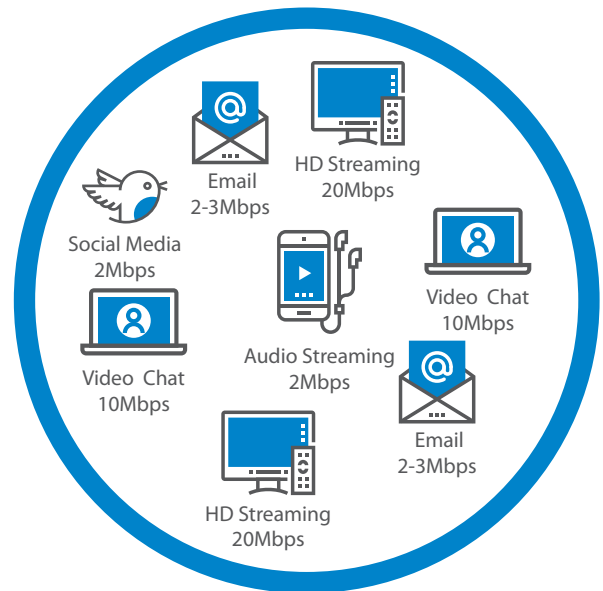
- Low Video Quality
- Distortion / Delays
- Limited Bandwidth for Minimal Online Activity



**Existing CAT 4 LTE**  
Educational Market Solution

### High Speed / High Capacity

- Crisp, Clear
- More Connected Devices
- Meets Real-world Online Demands



**Recommended CAT 18 LTE**  
MiFi Solution

	Current Offering	Inseego
LTE Technology	CAT 4	CAT 18
Wi-Fi	Single-band (2.4GHz only)	Dual-band (2.4 & 5GHz)
Battery Capacity	~2000mAh	4400mAh
Security Features to Support CIPA Compliance	no	yes
Advance Security Layers	no	yes
Expected Download Speeds	~10 Mbps	~120 Mbps
Supported Bands	Limited LTE Bands	Support of All Latest LTE Bands